

autop Maestro 2.32



OPERATIVE RANGE:

Repair and maintenance



PARTICULAR FEATURES:

2 motors, 2-post electro-mechanical lift without base frame

APPLICTAION:

The autop Maestro 2.32 lift is a 2 motor, electro-mechanical 2-post lift for repair and maintenance, with a lifting capacity of 3.2 t.

Maestro 2.32 has been developed especially to offer high flexibility and optimized lifting capacity for workshops servicing city cars, private cars and small transporters.

Maestro 2.32 is available with either flex pads or our new combiflex-08 pads.

We offer a large program of both U and flex pads for all models.

F-arms: H= 85-115 mm

CF-08-arms H = 95-250 mm

6 large guiding wheels





autop Maestro 2.32

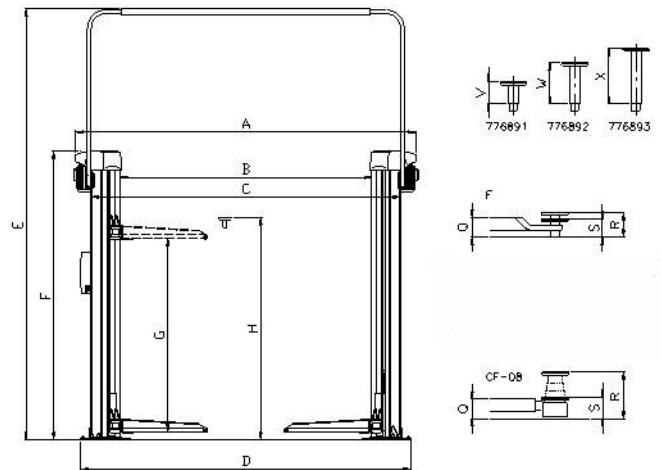
TECHNICAL DATA:

Capacity:	3200 kg
Lifting/lowering time:	ca.40 Sek.
Voltage:	230/400V/50Hz
Motors:	2 x 1.5 kW

	A	B	C	D	E	F	G	H	I	J	K	L
F	3240 - 3440	2380 - 2580	2960 - 3160	3120 - 3320	4050 - 4350	2713	1900	2020	2120 - 2320	550	465	Ø120
CF-08	3240 - 3440	2380 - 2580	2960 - 3160	3120 - 3320	4050 - 4350	2713	1900	2030	2120 - 2320	550	465	Ø120
	M	N	O	P	Q	R	S	T	U	V	V	X
F	540	850	900	1425	95	115	85			100	190	260
CF-08	555	840	920	1415	92	250	95			100	190	

COMPONENTS:

- Spindle, cold-rolled, centered, long working life
- Lifting mechanism: 6 large guiding wheels in lubrication-free needle bearings
- Nut set: highest quality due to special synthetic alloy
- Safety systems:
 - Nut breakage system
 - Internal arm locking device that automatically releases in bottom position
 - Control unit with dead-man controls and separate main switch
- Swivel arms: can be parallel parked, especially for vehicles with a short wheel base

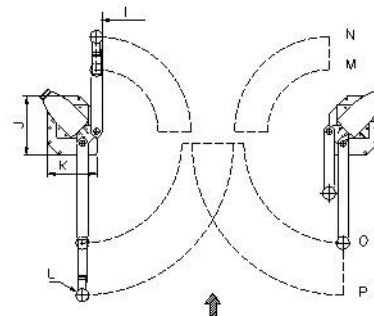


OPTIONAL:

- A wide range of lifting pads
- Power and air supply
- Rechargeable LED hand lamp

STANDARD COLOURS:

Posts RAL 9002 white
Arms RAL 7016 grey anthracite



MOREOVER:

Our expert consultants would appreciate to help you with the planning of a new garage or the modernization of an existing one. We offer to work out a workshop concept including an equipment proposal. Please do not hesitate to contact us.

No liability accepted for specifications that are subject to alteration - validity 03/2011

The data and pictures in this product information are not binding and are only giving an approximate description. Moreover we reserve the right of differences between the goods delivered and the data and pictures given here (i.e. technical data, equipment, material and optical appearance) so far as the differences are reasonable for the customer and a possible reduction in value or utility value of the goods delivered is not considerable.

