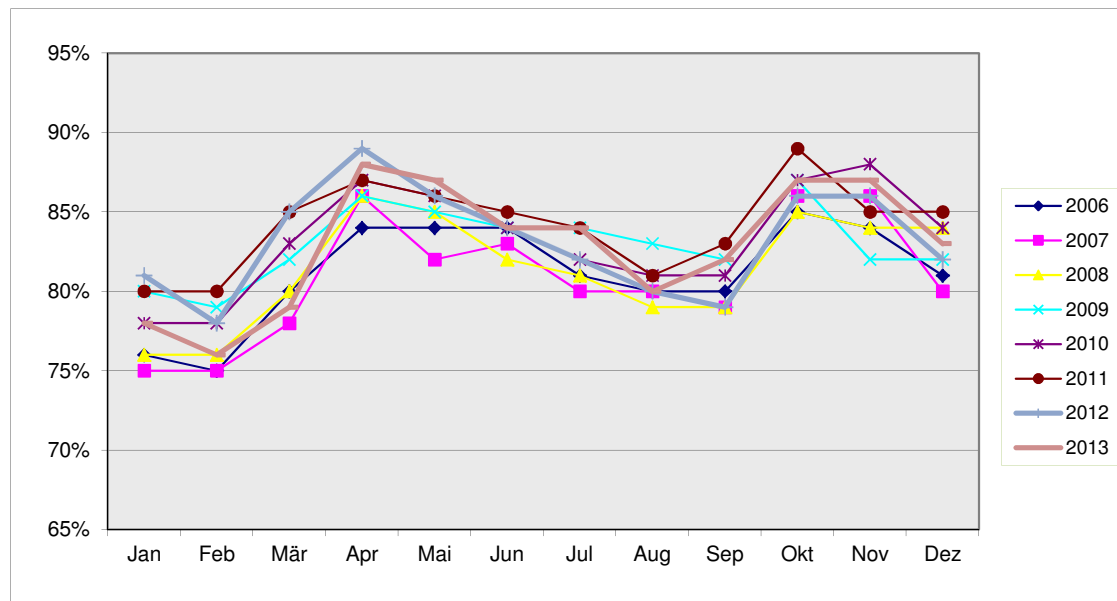




## Deutsches Kraftfahrzeuggewerbe

### Werkstattauslastung

	Jan	Feb	Mär	Apr	Mai	Jun	Jul	Aug	Sep	Okt	Nov	Dez
<b>2006</b>	76%	75%	80%	84%	84%	84%	81%	80%	80%	85%	84%	81%
<b>2007</b>	75%	75%	78%	86%	82%	83%	80%	80%	79%	86%	86%	80%
<b>2008</b>	76%	76%	80%	86%	85%	82%	81%	79%	79%	85%	84%	84%
<b>2009</b>	80%	79%	82%	86%	85%	84%	84%	83%	82%	87%	82%	82%
<b>2010</b>	78%	78%	83%	87%	86%	84%	82%	81%	81%	87%	88%	84%
<b>2011</b>	80%	80%	85%	87%	86%	85%	84%	81%	83%	89%	85%	85%
<b>2012</b>	81%	78%	85%	89%	86%	84%	82%	80%	79%	86%	86%	82%
<b>2013</b>	78%	76%	79%	88%	87%	84%	84%	80%	82%	87%	87%	83%



Stand: 16.01.2014, Quelle: ZDK/Autohaus

durchschnittliche Prozentzahlen

	Jan	Jan-Feb	Jan-Mär	Jan-Apr	Jan-Mai	Jan-Jun	Jan-Jul	Jan-Aug	Jan-Sep	Jan-Okt	Jan-Nov	Jan-Dez
<b>2006</b>	76%	76%	77%	79%	80%	81%	81%	81%	80%	81%	81%	81%
<b>2007</b>	75%	75%	76%	79%	79%	80%	80%	80%	80%	80%	81%	81%
<b>2008</b>	76%	76%	77%	80%	81%	81%	81%	81%	80%	81%	81%	81%
<b>2009</b>	80%	80%	80%	82%	82%	83%	83%	83%	83%	83%	83%	83%
<b>2010</b>	78%	78%	80%	82%	82%	83%	83%	82%	82%	83%	83%	83%
<b>2011</b>	80%	80%	82%	83%	84%	84%	84%	84%	83%	84%	84%	84%
<b>2012</b>	81%	80%	81%	83%	84%	84%	84%	83%	83%	83%	83%	83%
<b>2013</b>	78%	77%	78%	80%	82%	82%	82%	82%	82%	83%	83%	83%